



# VILLUM FOUNDATION

Supporting  
science and technology research

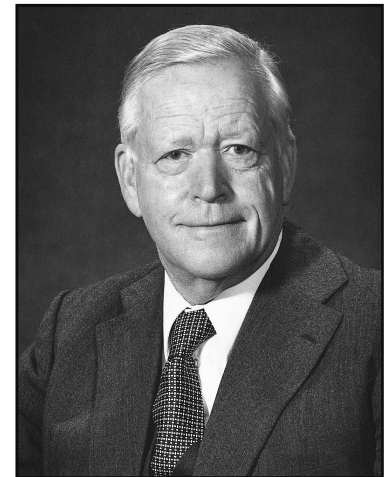
CEO Kjeld Juel Petersen

2013



# The VILLUM FOUNDATION

- The VILLUM FOUNDATION is a non-profit foundation created in 1971 by engineer Villum Kann Rasmussen
- The foundation is the principal shareholder of VKR Holding, the parent company of VELUX A/S and other companies in the VKR Group
- VKR Group employs approx. 14.000 people
- VKR Group is situated in more than 40 countries



1909-1993



# Members of Board

- Lars E. Kann-Rasmussen, *Chairman*
- Kristian Stubkjær, *Vice-chairman*
- Peter Landrock
- Bodil Nyboe Andersen
- Steen Riisgaard
- Bjarne Graabæk Thomsen
- Astrid Kann-Rasmussen, *the family's observer under the statutes*



*Nina Smith (far right) has resigned from the board march 2013, while Steen Riisgaard joined the board May 2013*



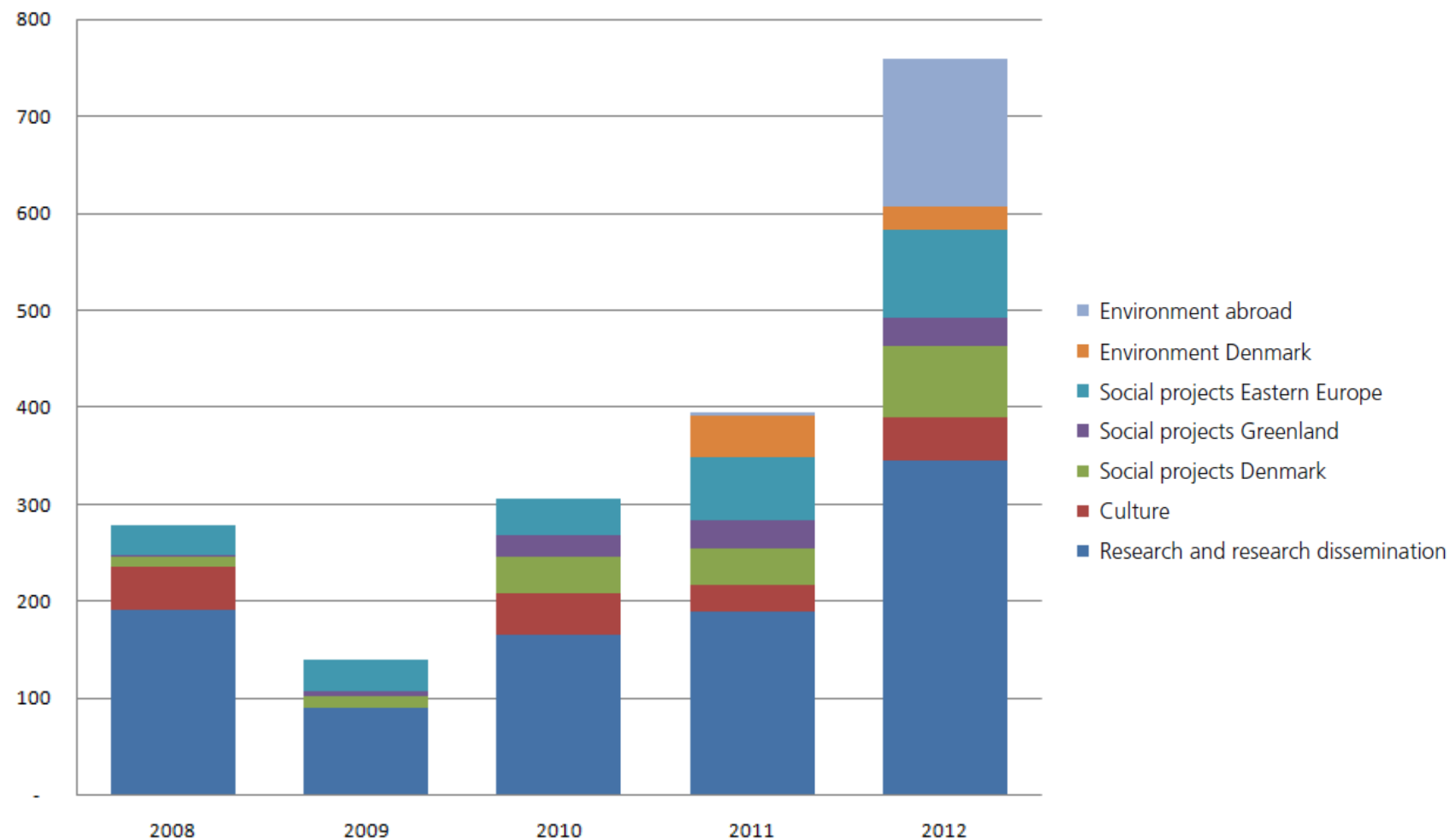
## The VILLUM FOUNDATION supports:

- **Research projects – Science and Technology**
- Dissemination of scientific and technical research
- Social projects in Denmark, Greenland and Eastern Europe
- Environmental and sustainability projects
- Other non-profit projects in Denmark and abroad, e.g. artistic and cultural projects



# The VILLUM FOUNDATION's total grants 2008-2012

Mio. kr.





# The VILLUM FOUNDATION's grant policies

The Foundation's donations and grants are made for the priority areas laid down in the statutes.

- The Villum Kann Rasmussen Annual Award for Technical and Scientific Research
- Research Projects – Science and Technology (*basic research without immediate commercial application*)
- VILLUM Centres of Excellence
- VILLUM Visiting Professor Programme
- VILLUM Postdoc Programme
- VILLUM Young Investigator Programme
- Programme for Research Infrastructure
- Villum Kann Rasmussen Professorship



## The VILLUM FOUNDATION *do not in principle support*

- Research projects with a budget below 500.000,- DKK
- Co-financing of projects and centres which have already been initiated and supported by other grants
- Projects within medical sciences or projects with specific immediate applications towards processes or products in mind
- Salary to tenured researchers
- Ph.D. projects which are not an integral part of a Research Project or a VKR Centre of Excellence
- Individual postdoc projects outside the Postdoc Programme or Research Projects
- Overhead not related to the projects
- Conferences, workshops, master thesis studies and travel grants



# Research projects – basic research

## Support is granted for:

- Salary (research ass., postdoc, Ph.D. technician)
- Equipment
- Running costs
- Travel
- OH specified – max 20% of project expenses
- OH non-specified – max 5% of project expenses



*Topology optimization,  
weight optimized  
design*

Budget is typically 2-5 mio. DKK.





# Project application

- Project description (in English) must include
  - background and purpose
  - materials and methods
  - timeline
  - budget
  - CV's and list of publications
  - tenders from potential suppliers
  - letters of support
  - synopsis in English and Danish using layman terms



# An excellent application demonstrates

- A well defined, relevant and original idea
- A well described method and research plan
- Ample knowledge of the state of the art
- Availability of relevant resources incl. academic competencies
- Convergence between budget and project activities
- Includes all mandatory appendices and information



# Application processing procedures

- No application deadlines (except for Young Investigator Programme and Postdoctoral Programme)
- Guidance and application form is available at the website
- Please send your application form and attachments to [ansoeg@villumfonden.dk](mailto:ansoeg@villumfonden.dk)
- Only rarely do we meet with prospective applicants
- Council and guidance is provided by the secretariat or by consulting the Foundation website



# Research projects - General procedure and assessment process

1. Secretariat (registration and initial processing)
2. Processing by workgroup consisting of three professors
3. First board meeting evaluation
4. External (international) project review
5. Evaluation by the workgroup
6. Second board meeting evaluation and final decision
7. The anonymized evaluation by the external reviewer may be sent to the applicant for commenting
8. Grant letters or rejection notices are forwarded by letter



## External reviewers

- Are involved following the first board meeting evaluation
- Selected ad hoc according to the nature of the application
- Applications with a budget above 2 M. DKK are always evaluated by external reviewers
- Reviewers from outside DK are preferably used in order to avoid conflicts of interest
- Reviewers are anonymous and receive an honorarium



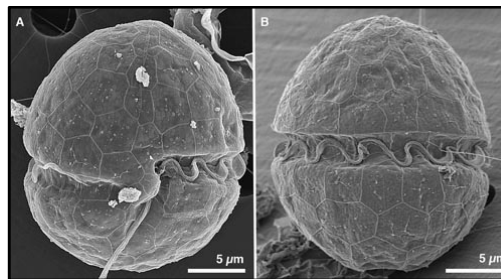
# Assessment criteria

- Scientific quality (excellence) of the project
- Applicant and other participants qualifications
- Fulfillment of the specific instrument/call
- Feasibility of the project
- How does the proposal and the applicant(s) rank compared to the research that has been published in the last five years, e.g. the top third
- Budget and economy - cost benefit



## Research projects granted recently - examples

- Towards Direct Surface Transport on Topological Insulators  
7,1 M. DKK.
- Studying energy transfer and energy storage in organic molecules with imaging techniques and femtosecond lasers  
2,3 M. DKK.
- Experimental mathematics in number theory, operator algebras and topology  
5,8 M. DKK.



*A study of biodiversity and phylogeny in Dinophyceae (dinoflagellates)*



# The Villum Kann Rasmussen Annual Award for Technical and Scientific Research

- Granted since 1981; awarded to 31 researchers so far
- Awarded to a Danish researcher at the highest international level
- Awarded by the board of the VILLUM FOUNDATION following nomination by an external committee
- The award prize is presently 2.5 M. DKK of which 500.000 DKK is a personal award
- The award cannot be applied for



*Lars E. Kann-Rasmussen presents the annual award to Carsten Rahbek, 2013*





## VKR Centres of Excellence – the basics

- 25-30 M. DKK over 5 (6) years (plus an equal amount in co-financing from the applicants)
- Yearly evaluation by an external advisory board, midterm reviews and final evaluation
- May be extended with an additional 5 (4) years



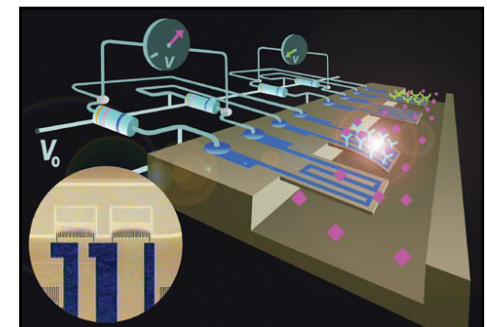
*Center for Hydrology  
– a hydrological observatory*



# VKR Centres of Excellence – procedure

- Proposal (3-5 pages) from applicant  
No deadline
- Invited letter of interest (10 pages) + meeting
- Full application (50 pages)  
International review

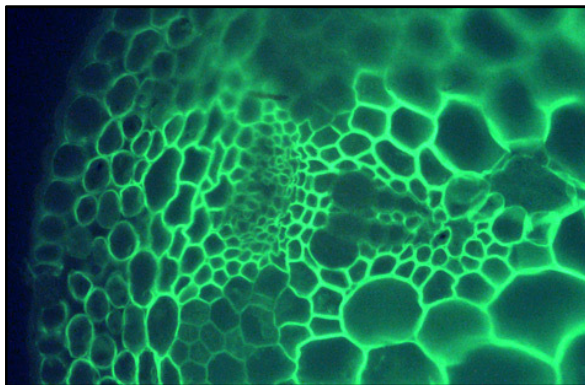
*NAMEC, DTU.  
Development of nano-mechanical ultra-  
sensitive sensors*





## VKR Centres of Excellence – criteria 1

- The research is original and groundbreaking
- The research is at the highest international level
- The research leader is an internationally renowned driving force
- Only basic research without immediate commercial application



*Center for Proactive Plants*



## VKR Centres of Excellence – criteria 2

- The centre must unite the most relevant and qualified partners from different research institutions in DK
- The center must have proven good ties with the international research community
- Support by the Foundation must “make a difference” and empower innovative research groups



*The research in the CREAM Centre will contribute to the protection of our drinking water.*



# Current VKR Centres of Excellence

CLIMAITE - Center for Biological Effects of Climatic Changes (DTU)

CLEAR - Center for Lake Restoration (SDU)

CREAM - Center for Environment and Soil Microbiology (LIFE, KU)

HOBE - Center for Hydrology (KU)

Plant Plasticity (LIFE, KU)

NATEC - Center for Nanophotonics for Terabit Communication (DTU)

MTLAB – Modelling of Information Technology (DTU)

NAMEC - NAnoMEChanical sensors and actuators (DTU)

CSGB - Center for Stochastic Geometry and Advanced Bioimaging (AU)

Centre for Ocean Life (DTU)

BioNEC - Biomolecular Nanoscale Engineering Center (SDU)



# VILLUM Visiting Professor Programme

## Aim:

Via a visit that may last for a minimum of 2 months and a maximum of 6 months:

- strengthening research and education in Denmark
- supplementing Danish research environments with international experience and knowledge
- promoting the development of international research networks and teaching programmes in Denmark



# VILLUM Visiting Professor Programme

The programme covers:

- natural and technical sciences
- architecture
- commercial and business research
- business economics

Grants 2013 – 2014: 19.3 M. DKK.

Application:

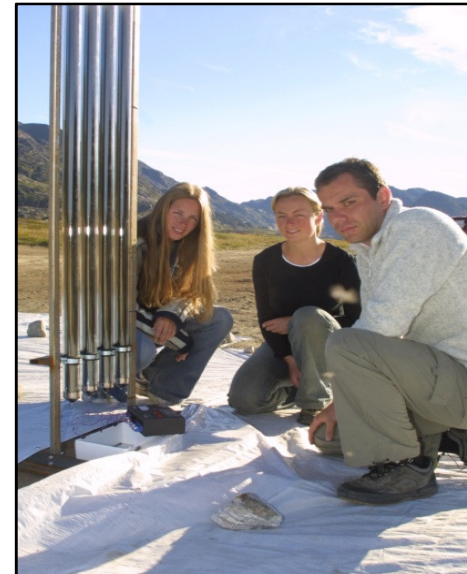
- Applications from the researchers are prioritized by the institute director or the dean for each institution prior submission. Next invitation: expected fall 2014



# VILLUM Postdoctoral Programme

## Purpose:

To support especially talented, young researchers in science and technology with ambitions of establishing their own, independent research profiles at research institutions in DK or abroad for 1-2 years.







# VILLUM Postdoctoral Programme

Grants 2014 – 2015 : 60 M. DKK.

The programme is divided into

- individual applications from Danish postdoctoral candidates: 20 M. DKK.
- applications from Danish institutions (block-stipends) with a view to employing postdoctoral candidates, including from outside Denmark: 40 M. DKK.

Number of postdoc grants : approx. 25 each year

Administration of the Programme: University of Southern Denmark, SDU, and an external evaluation board

Deadline for submission: Expected to be spring 2014.



---

# VILLUM Young Investigator Programme

## Aim:

To support especially talented, young Danish researchers in science and technology with ambitions of establishing their own, independent research profiles.

## Programme :

- senior postdocs with 2-3 years of postdoc experience who are not currently permanently employed. Max. 4 M. DKK. for 3 years.
- relatively newly appointed associate professors with up to 3 years tenure. Max. 7 M. DKK. for 5 years.

## Deadline:

Next deadline is expected to be 1 July 2014.



# Research Infrastructure Programme

Grants are awarded to e.g.:

- Advanced equipment
- Instrument Centres
- Special Laboratory Facilities
- Experimental Facilities
- Databases
- Networks of Research
- Large Research Centres
- Natural History Collections
- Biobanks

*Application by invitation only*



*VILLUM Research Station at Station Nord in Greenland, 70,5 M. DKK.*

*The photo illustrates the present somewhat humble monitoring and research facility.*



## Before submitting – some well-meant advice

- Take the necessary time in the preparation of your application
- Be thorough and pay attention to all application formalities
- Help and guidance can be found on the Foundation website: [www.villumfonden.dk](http://www.villumfonden.dk), or by contacting the secretariat
- Only rarely do we meet with potential applicants
- Be prepared for dialogue and questions from Foundation

**We look forward to receiving your application**